

Restoration and Repair Overview



Unsightly and failing patches marring the uniform appearance of the natural stone



Loss of essential architectural lines and hazardous deterioration over entry



Failing cheek walls on entry stairs with joints open to moisture incursion



Lost corner modillions leaving ferrous anchors bare and vulnerable to corrosion



Deteriorating wrought iron handrails at entrance stairway



Loss of essential architectural detail in prominent locations



Void after removing a ten-pound piece of unsecured stone perched directly over the entrance



Leading edges of detail with extreme deterioration, friable stone, moisture damage, and biological growth

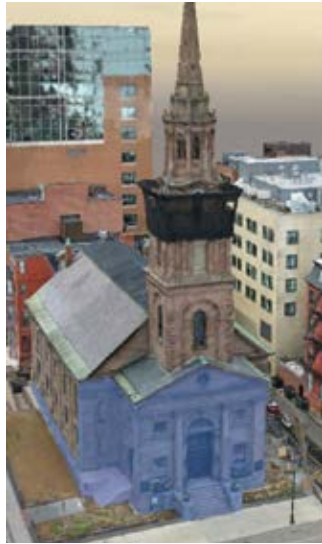


Skyward facing joints that have suffered failed treatments and remain open to moisture incursion

Master Plan Phases

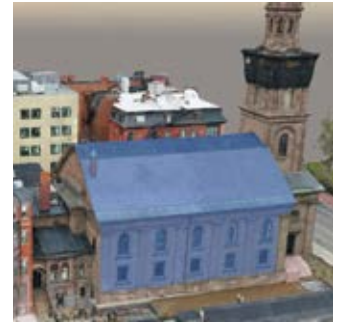
Phase 1: Portico and Accessibility

- Portico restoration with a focus on cornices, pilaster corners, stairs, entrances, and the ramp
- Reconstruction of north and south stairs with new brownstone
- North ramp and basement stair enclosure
- Restoration of wood windows, doors, and cornices with replacement hardware for portico entrances
- Gutter, flashing, and downspout replacement
- Bird control
- Wrought iron railing restoration at east stairs
- Iron sconce restoration at east entrance
- Initial exploration and make safe efforts of steeple including investigation, hands-on sounding, and mock-ups



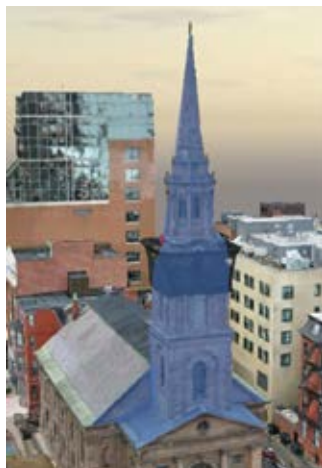
Phase 2: Sanctuary Stone, Roof, and Gutters

- Slate and membrane roof replacement
- Restoration of cornice and body brownstone on north and south sides of sanctuary
- Lightning protection



Phase 3: Steeple

- Steeple restoration
- Portico roof and flashing
- Belfry louver replacement
- Clock face and mechanics
- Weathervane
- Interior steel repairs
- 100% repointing of steeple interior and exterior
- Lightning protection



Phase 4: Parish House, West Elevation

- Parish house brownstone, brick façades, and chimney
- Sanctuary west facade
- Parish house membrane roof replacement
- Lightning protection

